

# Yaesu DR2X Repeater Overview



# Overview

- Introduction to the DR2X
- C4FM Overview
- C4FM vs. D-STAR
- SMRC D-STAR Roadmap
- Repeater Backhaul Configuration

# Introduction to the DR2X

- Yaesu's latest offering in analog + digital repeaters
- Dual-band (2m + 70cm)
  - No simultaneous transmit = two access channels
- Automatic Mode Select (AMS)
  - Automatically senses analog FM or C4FM digital
  - Transmit out can be fixed to either FM or C4FM
- Programmable from the repeater control face
  - No computer program/cables required

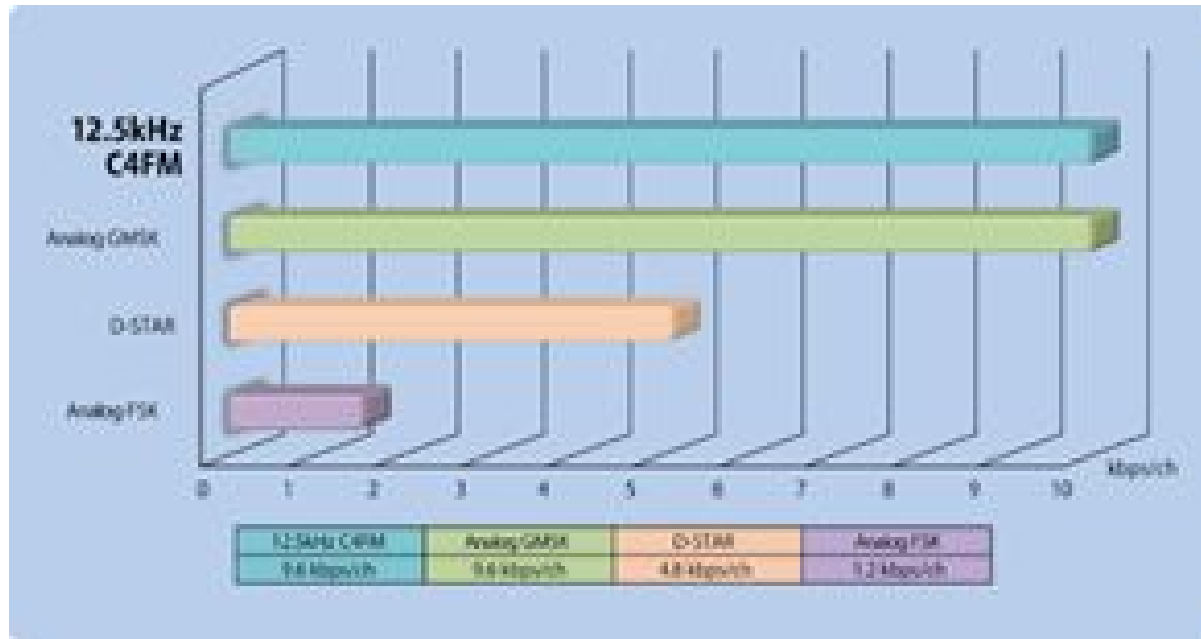


# Introduction to the DR2X

- Auto-switching to backup DC power built-in
- Multi-Site Repeater Link
  - LAN card allows repeater to be linked to other repeaters using a standard TCP/IP connection
- Programmable voice & text message/announcement function

# C4FM Overview

- One of the “Big 3” digital modes currently used in amateur radio
  - Similar functionality to D-STAR & DMR
  - Provides both digital voice & data
  - Uses 4-level FSK in a 12.5kHz occupied bandwidth



# C4FM Overview

- Three major user-selectable operating modes
  - V/D Mode (Voice/Digital)
    - Uses 6.25kHz for digital voice + 6.25kHz for error correction
    - Allows maximum signal decodability under limit conditions
  - Voice FR Mode
    - Uses all 12.5kHz for voice
    - Better voice quality at the expense of dropped frame risk
  - Data FR Mode
    - Uses all 12.5kHz for data transmission
    - Up to 9600 bps data rate



# C4FM Overview

- Group Monitor Function
  - Allows users to check the status of a designated Group
    - On-air / In-range
    - Position
    - Group text message capability
- All this works seamlessly with traditional analog FM functionality
  - Don't have to go out and buy a new radio to talk

# C4FM vs. D-STAR

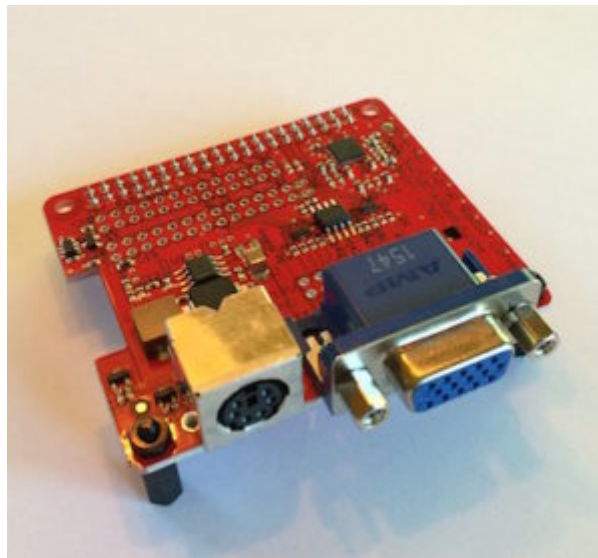
- C4FM provides similar functionality, but **is not compatible** with D-STAR

	D-STAR	C4FM
VOCODER	AMBE+	AMBE+2
MODULATION	GMSK	C4FM
MULTIPLEX METHOD	FDMA	FDMA
TRANSMISSION RATE	4.8kbps	9.6kbps
BANDWIDTH	6.25kHz	12.5kHz
REGISTRATION REQUIRED	YES	NO
LINKING	YES INTERNET / OTHER	YES INTERNET / OTHER
ANALOG / DIGITAL DUAL-MODE	NO	YES
USER GROUPS / MONITORING	NO	YES



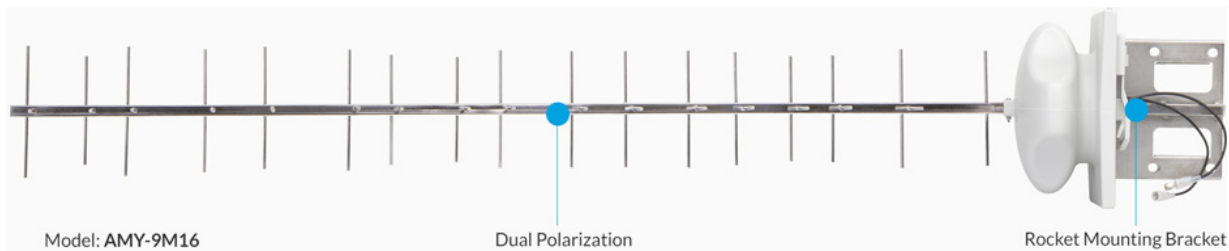
# SMRC D-STAR Roadmap

- Old DR1X repeaters were compatible with Northwest Digital UDRC 2
  - Adds D-STAR capability to DR1X repeaters allowing 3-way operation
- DR2X is not currently compatible with UDRC due to rear-panel pinout
  - ARCOM (repeater controllers) is actively engaged with Yaesu
  - Expect a firmware update to the machines which will fix
- SMRC objective is to support both digital modes on our repeater system



# Repeater Backhaul Configuration

- The DR2X does not simultaneously TX/RX on 2m/70cm
  - Will have to leverage existing 70cm link radios in the short-term
- Our DR2X machines are all equipped with MSRL LAN card
  - Allows TCP/IP networking
- Ubiquiti Part 15 NLOS 900 MHz may provide a better solution
  - Approximately \$570 to link two sites



# Questions?

*Kurt Kochendarfer, KE7KUS  
ke7kus@gmail.com*